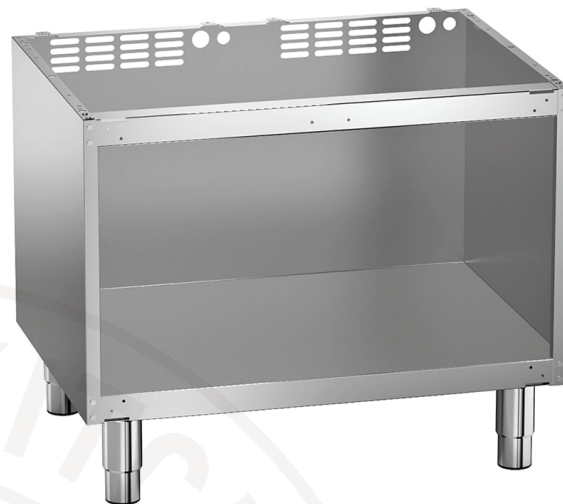


1SITG

UNDER COMPARTMENT - OPEN VERSION

Neutral undercompartment with free-standing structure, base made in AISI 304 stainless steel. Height adjustable floor-mounted feet in AISI 304 stainless steel, non-scratch sole in insulating plastic material. Feet are supplied at a fixed height of 15 cm. Foot extension 5 cm (minimum height / maximum height: 87.5 / 92.5 cm top element height included).



Product fitting up with integrated undercompartment

Functional features

- Free-standing structure to support work-top units.
- Open shelf version.
- Pre-set appliance for installation freestanding on feet; with specific accessories on cantilever on beam.

Constructional features

- Pre-arranged element to receive top elements.
- Structure with side panels, bottom and rear panel made in AISI 304 stainless steel with Scotch-Brite finish.
- Useful internal dimensions (W x D x H) cm: 75.1 x 56.9 x 40.8.
- Height adjustable floor-mounted feet in AISI 304 stainless steel, non-scratch sole in insulating plastic material. Feet are supplied at a fixed height of 15 cm. Foot extension 5 cm (minimum height / maximum height: 87.5 / 92.5 cm top element height included).

Safety equipment and approvals

- Approval to European Standard EN 1672-2 Hygienic Design.
- The product conforms to EC 1935/2004 Regulation and 21/03/1973 Rulemaking (Materials and Objects that are destined to come into Contact with Aliments).

Optional

- Door with right and left opening; tray holder frame.
- Wheels.

Technical Data

<i>Dimensions</i>	80x62x65 cm	<i>Packing</i>	84x65x67 cm
-------------------	-------------	----------------	-------------

UNDER COMPARTMENT - OPEN VERSION
Icon7000 prof.700